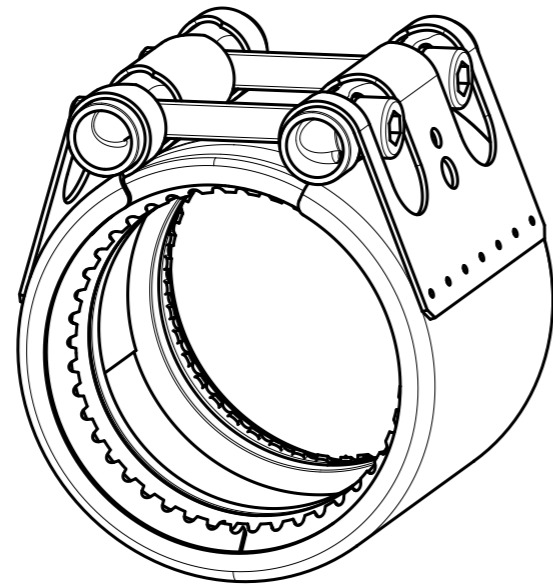
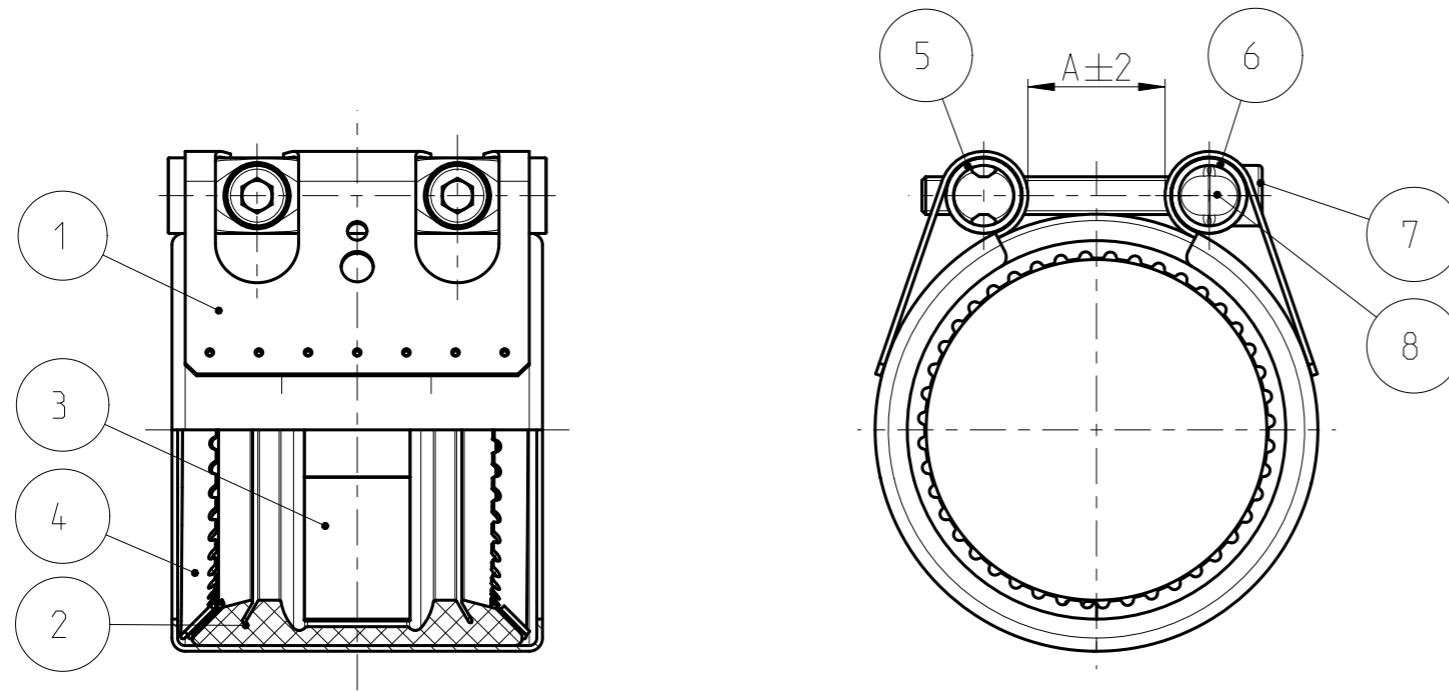


QUOTATION DRAWING



Teil-Nr. ITEM-NO.	Stueck QTY.	Benennung PART - NAME	Werkstoff MATERIAL	Oberflaeche SURFACE
1	1	Gehaeuse mit Bruecke Housing with bridge	1.4301 AISI 304	blank uncoated
2	1	Dichtmanschette Sealing sleeve	EPDM.P	-
3	1	Stahlbandeinlage Steel band insert	1.4571 AISI 316 Ti	blank uncoated
4	2	Verankerungsring Anchor ring	1.4310 AISI 301	-
5	1	Universal Gewindebolzen Universal threaded trunnion	1.0580 AISI 1024	beschichtet coated
6	1	Universal Fuehrungsbolzen Universal guidance trunnion	1.0580 AISI 1024	
7	2	Zylinderschraube DIN EN ISO 4762 Hexagonal socketed screw DIN EN ISO 4762	10.9	-
8	2	Universal Scheibe Universal washer	A4-80	-
9	1	Glyzerin Glycerine	-	-

-	-	-	-	-	-	-	-		
-	C	1	dim A29 was 39	-	2021-01-29	Lantsmann	Kraemer		
-	B	1	dim A=60 was 50	-	2020-01-28	Lantsmann	Kraemer		
-	A	-	Drawing separated & family table adapted; removed standard trunnions	01-610637	2012-12-07	Guru	Kraemer		
INDEX				REVISION SUMMARY		CHANGE-NO	DATE	DRAWN	CHECKED
PART	DWG	QTY							

1st ANGLE PROJECTION		ACCORDING TO:			PART NAME:					
	SCALE:	DATE: YYYY-MM-DD	NAME		Pipe-Coupling Grip E W2 EPDM OD 26.9 - 170.0					
	1:2	2009-11-09	Hartmann							
	MM	-	Kraemer							
PROJECT-NO.:	NORMA Germany GmbH		CUSTOMER:		CUSTOMER-NO.:					
9990001602	Postfach 1149 63461 Maintal		-		-					
CAD-SYSTEM:	(C) COPYRIGHT NORMA GROUP			NORMA-NO.:		INDEX	TYPE	FORMAT	SHEET	
Creo 3.0 M140	DIN ISO 16016			0579 9100 000		PART	DWG	Q	A3	1/2
DRAWING-NAME.: 05799100000_Q						-	C			

QUOTATION DRAWING

Pos.	RA OD	A	Teile-Nr. Part-No.
1	26.9	20	0579 9100 026
2	28.0	20	0579 9100 028
3	30.0	28	0579 9100 030
4	33.7	27	0579 9100 033
5	35.0	27	0579 9100 035
6	38.0	29	0579 9100 038
7	42.4	28	0579 9100 042
8	44.5	30	0579 9100 044
9	48.3	26	0579 9100 048
10	54.0	34	0579 9100 054
11	57.0	34	0579 9100 057
12	60.3	34	0579 9100 060
13	63.0	34	0579 9100 063
14	70.0	39	0579 9100 070
15	73.0	39	0579 9100 073
16	76.1	39	0579 9100 076
17	78.0	39	0579 9100 078
18	80.0	39	0579 9100 080
19	84.0	39	0579 9100 084
20	88.9	42	0579 9100 088
21	98.0	47	0579 9100 098
22	101.6	47	0579 9100 101
23	104.0	47	0579 9100 104
24	108.0	37	0579 9100 108
25	110.0	37	0579 9100 110
26	114.3	49	0579 9100 114
27	118.0	49	0579 9100 118
28	122.0	53	0579 9100 122
29	125.0	53	0579 9100 125
30	127.0	53	0579 9100 127

Pos.	RA OD	A	Teile-Nr. Part-No.
31	129.0	53	0579 9100 129
32	133.0	54	0579 9100 133
33	139.7	48	0579 9100 139
34	141.6	48	0579 9100 141
35	144.0	61	0579 9100 144
36	154.0	61	0579 9100 154
37	159.0	56	0579 9100 159
38	168.3	60	0579 9100 168
39	170.0	60	0579 9100 170

Ⓒ

Ⓑ

-	-	-	-	-	-	-	-	-	-		
-	-	-	-	-	-	-	-	-	-		
-	-	-	-	-	-	-	-	-	-		
-	-	-	-	-	-	-	-	-	-		
INDEX PART	DWG	QTY	REVISION SUMMARY				CHANGE-NO	DATE	DRAWN	CHECKED	
1st ANGLE PROJECTION		ACCORDING TO: -			PART NAME:						
		SCALE:	DATE: YYYY-MM-DD	NAME		Pipe-Coupling Grip E W2 EPDM					
		1:2	2009-11-09	Hartmann		OD 26.9 - 170.0					
		MM	CHECKED	Kraemer							
PROJECT-NO.:		NORMA Germany GmbH			CUSTOMER:		CUSTOMER-NO.:				
9990001602		Postfach 1149 63461 Maintal			-		-				
CAD-SYSTEM:		(C) COPYRIGHT NORMA GROUP			NORMA-NO.:		INDEX	TYPE	FORMAT	SHEET	
Creo 3.0 M140		DIN ISO 16016			0579 9100 000		PART	DWG	Q	A3	2/2
DRAWING-NAME.:		05799100000_Q									