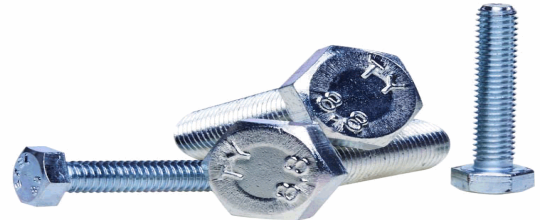


20023078

**Aufbauschraube**

**625 AF V4A**  
zur Montage mit Sicherungsplatte



07.02.2022 17:35:21

**Technical Data**

---

Weight	0,020 kg per piece
Gewindeart	M - metrisch
Length	25,000 millimeter
Mounting type	with locking plate
Nennweite / Gewinde	6
Standard of the screw	without
Strength class	A4-70
Typ der Schraube	AF - Surface-mounted screw
Werkstoff	1.4571

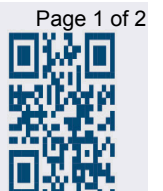
**Conformity**

---

Commodity code	73181590
Dual-Use	no
REACH regulation	2006/1907/EG (REACH)
RoHS directive	2011/65/EU (RoHS II)
RoHS directive (III)	2015/863/EC (RoHS III)

\* n/s - not specified  
n/a - not applicable

\*\* technical specifications/ conformities



**20023078**

**Aufbauschraube**

**625 AF V4A**  
**zur Montage mit Sicherungsplatte**



07.02.2022 17:35:21

This data sheet has been created with great care and all information has been checked for correctness. However, no liability is accepted for any incorrect or incomplete information. Product images and drawings are for illustration purposes only and may vary in detail. Due to the constant further development of the products, changes in the product range and the product design are reserved! Performance and consumption data as well as descriptions may therefore differ. The use of the products is beyond our control and is therefore not our area of responsibility.

