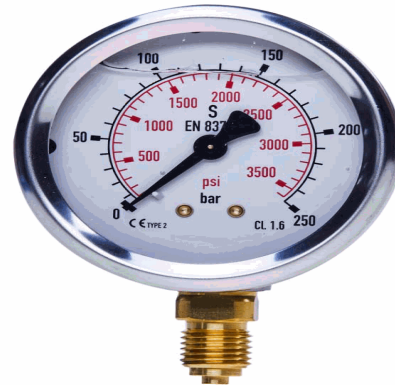


20154230

STAUFF® Edelstahl-Manometer

SPG-063-00002.5-07-S-B04, 0 bis 2,5 bar



03.04.2023 08:16:42

Technical Data

Weight	225 g per piece
Anschlussseite	bottom
Display size	Ø 63
Pressure display	n.a.
Pressure gauge type	analog
Pressure range	0 bis 2,5 bar
screw-in thread of the connector	1/4
thread type	G - Whitworth zylindrisch

Conformity

Commodity code	90262040
China-RoHS	n/a

* n/s - not specified
n/a - not applicable

** technical specifications/ conformities

This data sheet has been created with great care and all information has been checked for correctness. However, no liability is accepted for any incorrect or incomplete information. Product images and drawings are for illustration purposes only and may vary in detail. Due to the constant further development of the products, changes in the product range and the product design are reserved! Performance and consumption data as well as descriptions may therefore differ. The use of the products is beyond our control and is therefore not our area of responsibility.

