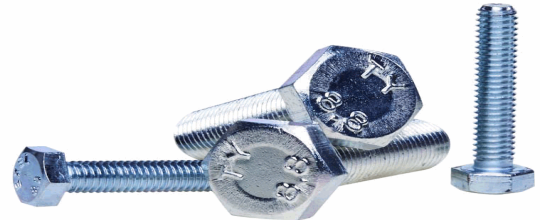


20014738

Außensechskantschraube

**645 AS V2A
zur Montage mit Deckplatte**



07.02.2022 17:35:12

Technical Data

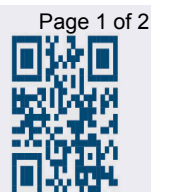
Weight	0,011 kg per piece
Gewindeart	M - metrisch
Length	45,000 millimeter
Mounting type	with top plate type
Nennweite / Gewinde	6
Standard of the screw	Hexagon head screw DIN 933
Strength class	A2-70
Typ der Schraube	AS - Hexagon head screw
Werkstoff	1.4301

Conformity

Commodity code	73181588
Dual-Use	no
REACH regulation	2006/1907/EG (REACH)
RoHS directive	2011/65/EU (RoHS II)
RoHS directive (III)	2015/863/EC (RoHS III)

* n/s - not specified
n/a - not applicable

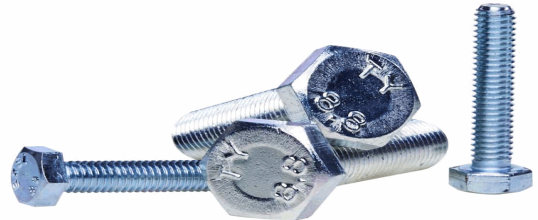
** technical specifications/ conformities



20014738

Außensechskantschraube

**645 AS V2A
zur Montage mit Deckplatte**



07.02.2022 17:35:12

This data sheet has been created with great care and all information has been checked for correctness. However, no liability is accepted for any incorrect or incomplete information. Product images and drawings are for illustration purposes only and may vary in detail. Due to the constant further development of the products, changes in the product range and the product design are reserved! Performance and consumption data as well as descriptions may therefore differ. The use of the products is beyond our control and is therefore not our area of responsibility.

