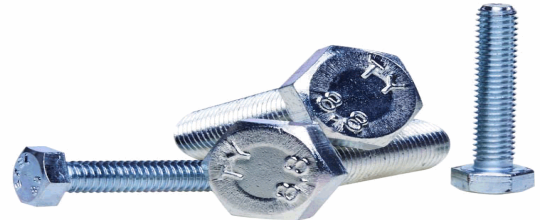


**20005056**

**Linsenkopfschraube**

**620 Li verzinkt  
zur Montage ohne Deckplatte**



07.02.2022 17:31:19

**Technical Data**

Weight	1 g per piece
Gewindeart	M - metrisch
Length	20,000 millimeter
Mounting type	without top plate type
Nennweite / Gewinde	6
Standard of the screw	Slotted cheese head screw ISO 1207
Strength class	8.8
Typ der Schraube	Li - pan head screw
Werkstoff	Stahl verzinkt

**Conformity**

Commodity code	
Dual-Use	no
REACH regulation	2006/1907/EG (REACH)
RoHS directive	2011/65/EU (RoHS II)
RoHS directive (III)	2015/863/EC (RoHS III)

\* n/s - not specified  
n/a - not applicable

\*\* technical specifications/ conformities



**20005056**

**Linsenkopfschraube**

**620 Li verzinkt  
zur Montage ohne Deckplatte**



07.02.2022 17:31:19

This data sheet has been created with great care and all information has been checked for correctness. However, no liability is accepted for any incorrect or incomplete information. Product images and drawings are for illustration purposes only and may vary in detail. Due to the constant further development of the products, changes in the product range and the product design are reserved! Performance and consumption data as well as descriptions may therefore differ. The use of the products is beyond our control and is therefore not our area of responsibility.

