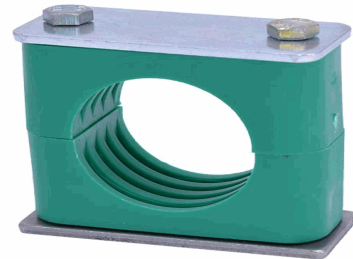


20011918

Doppel-Komplettschelle nach DIN 3015-3

22-0172-172-PA-GWD-V2A-855AS-V2A (HS06)



14.10.2022 13:38:16

Technical Data

Weight	1 g per piece
clamp / connector material	PA
colour	black
inner surface shape	R - ripping
pipe OD / nominal size	17,20 millimeter
preload	yes - with gap
series according to DIN 3015	double series (Z)
size clamp DIN 3015	2

Conformity

Commodity code	
Dual-Use	no
REACH regulation	2006/1907/EG (REACH)
RoHS directive	2011/65/EU (RoHS II)
RoHS directive (III)	2015/863/EC (RoHS III)

* n/s - not specified
n/a - not applicable

**** technical specifications/ conformities**

This data sheet has been created with great care and all information has been checked for correctness. However, no liability is accepted for any incorrect or incomplete information. Product images and drawings are for illustration purposes only and may vary in detail. Due to the constant further development of the products, changes in the product range and the product design are reserved! Performance

Karl Heitz Industrievertretungen GmbH | Senner Straße 151 | D-33659 Bielefeld

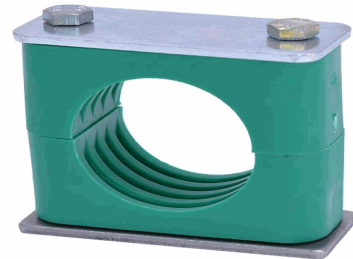
*Geschäftsführer: Dipl.-Ing. (FH) Thorsten Kott | Amtsgericht Bielefeld | HRB 32208 |
Fon: +49 (0)521 95005 - 02 | Fax: +49 (0)521 95005 - 33 | info@karl-heitz.de | www.karl-heitz.de*



20011918

Doppel-Komplettschelle nach DIN 3015-3

22-0172-172-PA-GWD-V2A-855AS-V2A (HS06)



14.10.2022 13:38:16

and consumption data as well as descriptions may therefore differ . The use of the products is beyond our control and is therefore not our area of responsibility.

