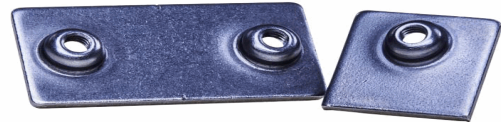


**20009480**

**Anschweißplatte, kurz**

**ASPL 60 V4A**



14.10.2022 13:04:02

**Technical Data**

Weight	0,013 kg per piece
length	140,000 millimeter
length [2]	90,0 millimeter
material	1.4571
number of clamp bodies	1
series according to DIN 3015	heavy series (S)
size clamp DIN 3015	6
thickness	10,000 millimeter
welding plate type	single
width	45,000 millimeter

**Conformity**

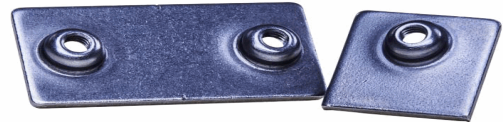
Commodity code	73269098
Dual-Use	no
REACH regulation	2006/1907/EG (REACH)
RoHS directive	2011/65/EU (RoHS II)
RoHS directive (III)	2015/863/EC (RoHS III)

\* n/s - not specified  
n/a - not applicable

**20009480**

**Anschweißplatte, kurz**

**ASPL 60 V4A**



14.10.2022 13:04:02

**\*\* technical specifications/ conformities**

This data sheet has been created with great care and all information has been checked for correctness. However, no liability is accepted for any incorrect or incomplete information. Product images and drawings are for illustration purposes only and may vary in detail. Due to the constant further development of the products, changes in the product range and the product design are reserved! Performance and consumption data as well as descriptions may therefore differ. The use of the products is beyond our control and is therefore not our area of responsibility.

