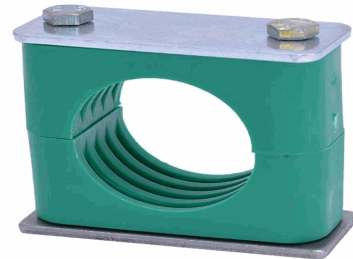


20011724

Komplettschelle nach DIN 3015-1

01-010-PP-DEP-AS-ASP (HS10)



14.10.2022 13:37:23

Technical Data

| | |
|------------------------------|---------------------|
| Weight | 1 g per piece |
| clamp / connector material | PP |
| colour | green |
| inner surface shape | R - ripping |
| pipe OD / nominal size | 10,00 millimeter |
| preload | yes - with gap |
| series according to DIN 3015 | standard series (L) |
| size clamp DIN 3015 | 1 |

Conformity

| | |
|----------------------|------------------------|
| Commodity code | |
| Dual-Use | no |
| REACH regulation | 2006/1907/EG (REACH) |
| RoHS directive | 2011/65/EU (RoHS II) |
| RoHS directive (III) | 2015/863/EC (RoHS III) |

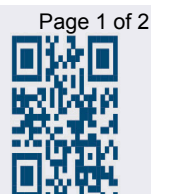
* n/s - not specified
n/a - not applicable

** technical specifications/ conformities

This data sheet has been created with great care and all information has been checked for correctness. However, no liability is accepted for any incorrect or incomplete information. Product images and drawings are for illustration purposes only and may vary in detail. Due to the constant further development of the products, changes in the product range and the product design are reserved! Performance

Karl Heitz Industrievertretungen GmbH | Senner Straße 151 | D-33659 Bielefeld

Geschäftsführer: Dipl.-Ing. (FH) Thorsten Kott | Amtsgericht Bielefeld | HRB 32208 |
Fon: +49 (0)521 95005 - 02 | Fax: +49 (0)521 95005 - 33 | info@karl-heitz.de | www.karl-heitz.de



20011724

Komplettschelle nach DIN 3015-1

01-010-PP-DEP-AS-ASP (HS10)



and consumption data as well as descriptions may therefore differ . The use of the products is beyond our control and is therefore not our area of responsibility.

14.10.2022 13:37:23

